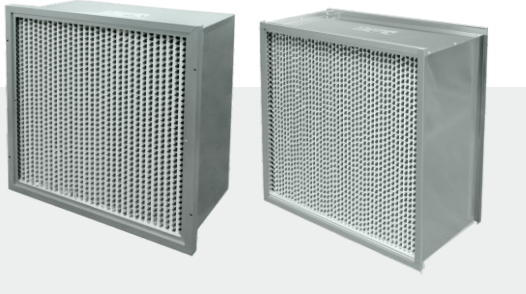


# FineAir I

Extended Surface Supported with Pleat Filters



## Product Overview

- Lightweight & sturdy structure
- Moisture resistant dual density media pack
- For difficult operating conditions/variable air volume
- Easy installation
- Available in three efficiencies: M6, F7, F8
- UL 900 Certificated

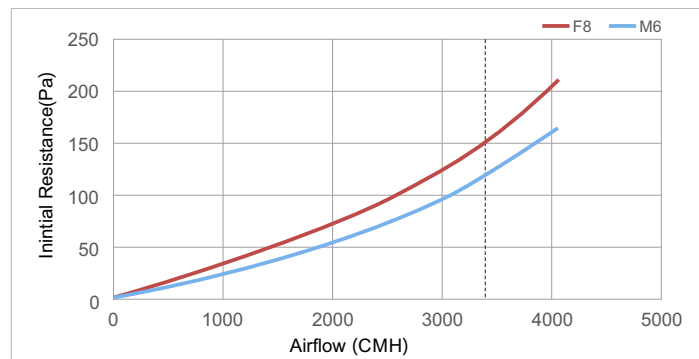
## Typical Applications

Commercial Buildings	Hospitality & Healthcare	Pharmaceutical	Museums & Historic Storage
Food & Beverage	Schools & Universities	Microelectronics	Subway Station & Railway Station

## Specifications

Filter Depth	150, 292mm
Efficiency	M6, F7, F8
Media	Fiberglass
Frame Material	GI/SUS/AL
Separator	Waveform Aluminium
Max operating temperature	158°F (70°C)
Sealant	Polyurethane(PU)
Structure	Single/Double Header
Special Size Available	No

## Initial Resistance vs Airflow(610 x 610 x 292mm)



## Standard Size and Performance Parameters

Nominal Size (Inches) H x W x D	Actual Size (mm) H x W x D	Airflow (CMH)	Initial Resistance (Pa)		
			M6	F7	F8
<b>SH/DH, 11½</b>					
24 x 24 x 11½	610 x 610 x 292	3400	120	140	150
12 x 24 x 11½	305 x 610 x 292	1700	120	140	150
<b>SH/DH, 6</b>					
24 x 24 x 6	610 x 610 x 150	1700	40	70	90
12 x 24 x 6	305 x 610 x 150	870	40	70	90

Additional Gasket & Protecting wire mesh are available upon request

